

... they are about men,  
women, and children."

— Walter Dudley, PhD  
Pacific Tsunami Museum, Science Advisor



## Tsunami Safety Guide

Hawai'i is vulnerable to both distant and locally generated tsunamis. A local tsunami could impact a shoreline within moments after an earthquake in the islands. Use the following information to prepare yourself for the next tsunami event.

### LOCALLY GENERATED TSUNAMI

- During an earthquake: If you're indoors: drop, cover and hold. If you're outdoors: stay away from tall structures.
- If you feel an earthquake and you're close to the coast – move to higher ground immediately.
- If you must, you can vertically evacuate to at least the third floor of a reinforced building six stories or higher.
- Leave possessions and quickly get you and your family out of the Tsunami Evacuation Zone.

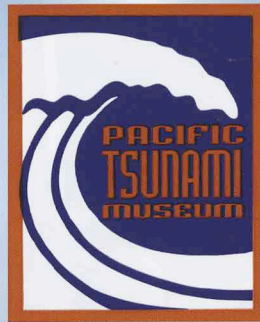
### DISTANT TSUNAMI (PACIFIC WIDE)

- Depending on where the tsunami was generated you may have as little as 4 hours to get to higher ground.
- Outdoor Warning Sirens are an indicator to turn on your TV or radio to get the latest emergency information.
- Limit phone usage to keep communication lines open for emergency responders.
- Check your emergency kits and review your emergency plan.

### PREPARE AHEAD OF TIME

- Know where your Tsunami Evacuation Zones are and how to get out of them quickly.
- Make an emergency kit and have at least seven days of food and water.
- Create an emergency plan that includes identifying in-state/out-of-state emergency contacts and post-disaster meeting places.
- Learn more about tsunamis and how to stay informed by visiting the Hawaii Emergency Management website: [www.scd.hawaii.gov](http://www.scd.hawaii.gov)

Remember: If you **FEEL** (ground shaking),  
**SEE** (ocean receding), or **HEAR** (roaring from the ocean) –  
**GO** to higher ground!



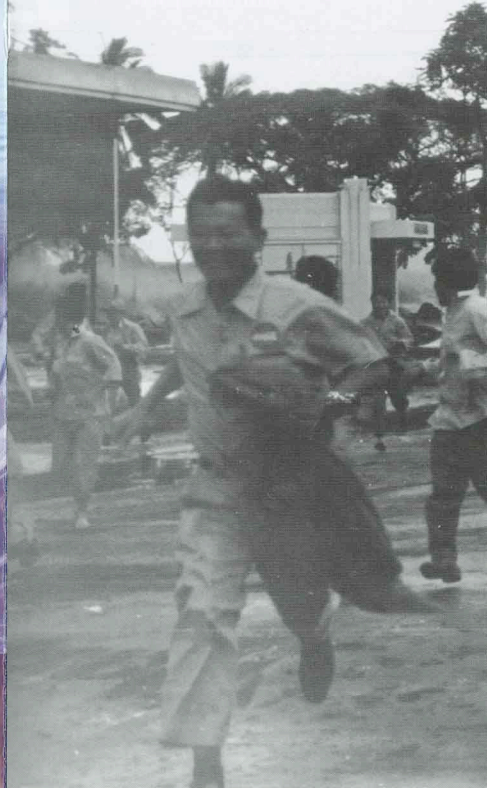
HILO • HAWAII

*Connecting History, Science,  
and the Human Spirit*




130 Kamehameha Ave, Hilo, HI 96720  
(808) 935-0926  
[www.tsunami.org](http://www.tsunami.org)

*"Tsunamis are not  
just about devastation  
and destruction ...*







Through **science**, **history** and stories of the **human spirit**, the Pacific Tsunami Museum is deeply committed to saving lives by educating the public about the powerful impact tsunamis have had in areas around the Pacific Ocean, including Japan, Alaska, and the Indian Ocean, as well as how tsunamis have shaped the life of the Hilo Community.

## Science

Experience the movement of the ocean on the Energy of Water Wave Machine or sit at the helm of a Tsunami Warning Center simulator.

In a collaborative effort with a team of experts, the Pacific Tsunami Museum has developed an easily accessible hands-on learning experience.

## History

The museum features a highly informative exhibit dedicated to the social and cultural history of Hilo. It houses one of the most extensive collections in the world of tsunami photographs, maps, oral histories, scientific papers, documents, videos, and artifacts, many of which are on display for the public to view.

## The Human Spirit

The Pacific Tsunami Museum is a living memorial to the courage and resilience of individuals and families in the face of the awesome power of nature.

Stories have always been one of the key components that has connected humankind throughout the ages. The Pacific Tsunami Museum is home to hundreds of interviews and written accounts of individuals who have witnessed and survived tsunamis in the Pacific Region.

*"We just cleaned up and went on with our lives. We never really talked about it, but that day changed everybody—forever."*

—Jeanne Branch Johnston

**Be Informed  
Be Safe  
Be Inspired**

**The Pacific  
Tsunami Museum**

**Donations are greatly appreciated and are tax-deductible.**

